

All India Coordinated Research Project on Agrometeorology

CRIDA, Santoshnagar, Hyderabad – 500 059

Daily Crop Weather Information as on 20 November 2018

Attention: Rajiv Maheshwari, OSD, ICAR

Significant Weather Features (IMD)

- The Well Marked Low pressure area lies over southwest Bay of Bengal & adjoining northeast Srilanka. Associated cyclonic circulation extends upto 5.8 km above mean sea level. It is likely to concentrate into a depression during next 24 hours.
- The present feeble Western Disturbance as an upper air cyclonic circulation at 3.1 km above mean sea level lies over Jammu & Kashmir and another Western Disturbance as a trough in lower level tropospheric westerlies with its axes at 3.1 km above mean sea level runs along Long. 67° E to north of 33° N. Under the influence of above disturbance isolated precipitation likely over Jammu & Kashmir during next 24 hours and isolated to scattered precipitation over Western Himalayan region between 22nd to 24th November.
- The images showing the latest satellite picture in figure. 1.

Main Weather Observations (IMD)

- Rainfall observed (from 0830 hours IST of yesterday to 0830 hours IST of today): Rain/thundershowers observed at many places over Tamilnadu & Puducherry and Kerala; at a few places over Andaman & Nicobar Islands; at isolated places over Konkan & Goa, Madhya Maharashtra, Vidarbha, North Interior Karnataka and Jammu & Kashmir.
- Maximum temperature departures as on 19-11-2018: Maximum temperatures were appreciably above normal (3.1°C to 5.0°C) at many places over Rajasthan, Madhya Pradesh, Vidarbha, Chhattisgarh, Telangana and Kerala and at isolated places over Saurashtra & Kutch and above normal (1.6°C to 3.0°C) at most places over Gujarat Region, Marathwada, Coastal Andhra Pradesh and Jharkhand; at many places over interior Karnataka and Odisha; at a few places over Gangetic West Bengal and Lakshadweep and at isolated places over Jammu & Kashmir, Himachal Pradesh, Tamilnadu & Pudducherry, Kerala and Andaman & Nicobar Islands. They were below normal (-1.6°C to -3.0°C) at many places over Arunachal Pradesh; at a few places over West Uttar Pradesh and at isolated places over Assam & Meghalaya,

Sub-Himalayan West Bengal & Sikkim, East Uttar Pradesh and Madhya Maharashtra and near normal over rest of the country.

- Yesterday, the highest maximum temperature of 37.2°C was recorded at Bhuj (Saurashtra & Kutch) over the plains of the country.
- Minimum temperature departures as on 20-11-2018: Minimum temperatures are markedly above normal (5.1°C to more) at most places over Marathawada; at many places over Madhya Maharashtra; appreciable above normal (3.1°C to 5.0°C) at most places over Telangana; at many places over West Madhya Pradesh; at a few places over Konkan & Goa; above normal (1.6°C to 3.0°C) at most places over Coastal Andhra Pradesh, Rayalaseema, West Rajasthan and Vidarbha; at many places over East Rajasthan and interior Karnataka; at a few places over East Madhya Pradesh and Kerala; at isolated places over Tamilnadu, Saurashtra & Kutch, Jammu & Kashmir, Punjab, Himachal Pradesh and Haryana, Chandigarh & Delhi. They are below normal (-1.6°C to -3.0°C) at most places over Nagaland, Mizoram, Manipur & Tripura; at a few places over Bihar, West Bengal & Sikkim and Assam & Meghalaya and near normal over rest of the country.
- The lowest minimum temperature 8.8°C recorded at Kanpur/Chakeri (East Uttar Pradesh) over the plains of the country.

Weather Warning during next 5 days (IMD)

- 20 November (Day 1): Heavy rain at a few places with very heavy falls at isolated places very likely over coastal Tamilnadu & Puducherry, heavy falls at isolated places over rest Tamilnadu and south Coastal Andhra Pradesh. Squally winds 40-50 kmph gusting to 60 kmph is likely to prevail over southwest Bay of Bengal, Gulf of Mannar and along and off Tamilnadu coast. Sea condition will be rough to very rough over the southwest Bay of Bengal, Gulf of Mannar and along and off Tamilnadu coast. Fishermen are advised not to venture into these areas. Thunderstorm accompanied with gusty winds and lightening at isolated places very likely over south Madhya Maharashtra and south Konkan & Goa.
- 21 November (Day 2): Heavy to very heavy falls at isolated places very likely over coastal Tamilnadu & Puducherry and heavy falls at isolated places over south Coastal Andhra Pradesh, south Rayalaseema, South Interior Karnataka and Kerala. Squally winds 40-50 kmph gusting to 60 kmph is likely to prevail over southwest Bay of Bengal, Gulf of Mannar and along and off Tamilnadu coast. Sea condition will be rough to very rough over the southwest Bay of Bengal, Gulf of Mannar and along and off Tamilnadu coast. Fishermen are advised not to venture into these areas. Strong wind 30-40 kmph gusting to 50 kmph likely over interior Tamilnadu. Thunderstorm accompanied with gusty winds and lightening at isolated places very likely over south Madhya Maharashtra and south Konkan & Goa.

- 22 November (Day 3): No weather warning.
- 23 November (Day 4): No weather warning.
- 24 November (Day 5): No weather warning.
- The weather outlook for the period of seven days *i.e* 20 to 27 November 2018 forecasted (*Provided by Real-Time Weather Forecasts from NOAA/NCEP collected from <http://monsoondata.org/wx2/>*) rain/thundershower may occur at a few places over Jammu & Kashmir, Konkan & Goa, Madhya Maharashtra, Vidarbha, North Interior Karnataka, Kerala, Tamilnadu & Puducherry and Andaman & Nicobar Islands. (Fig. 2).

Agricultural activities (AICRPAM-CRIDA)

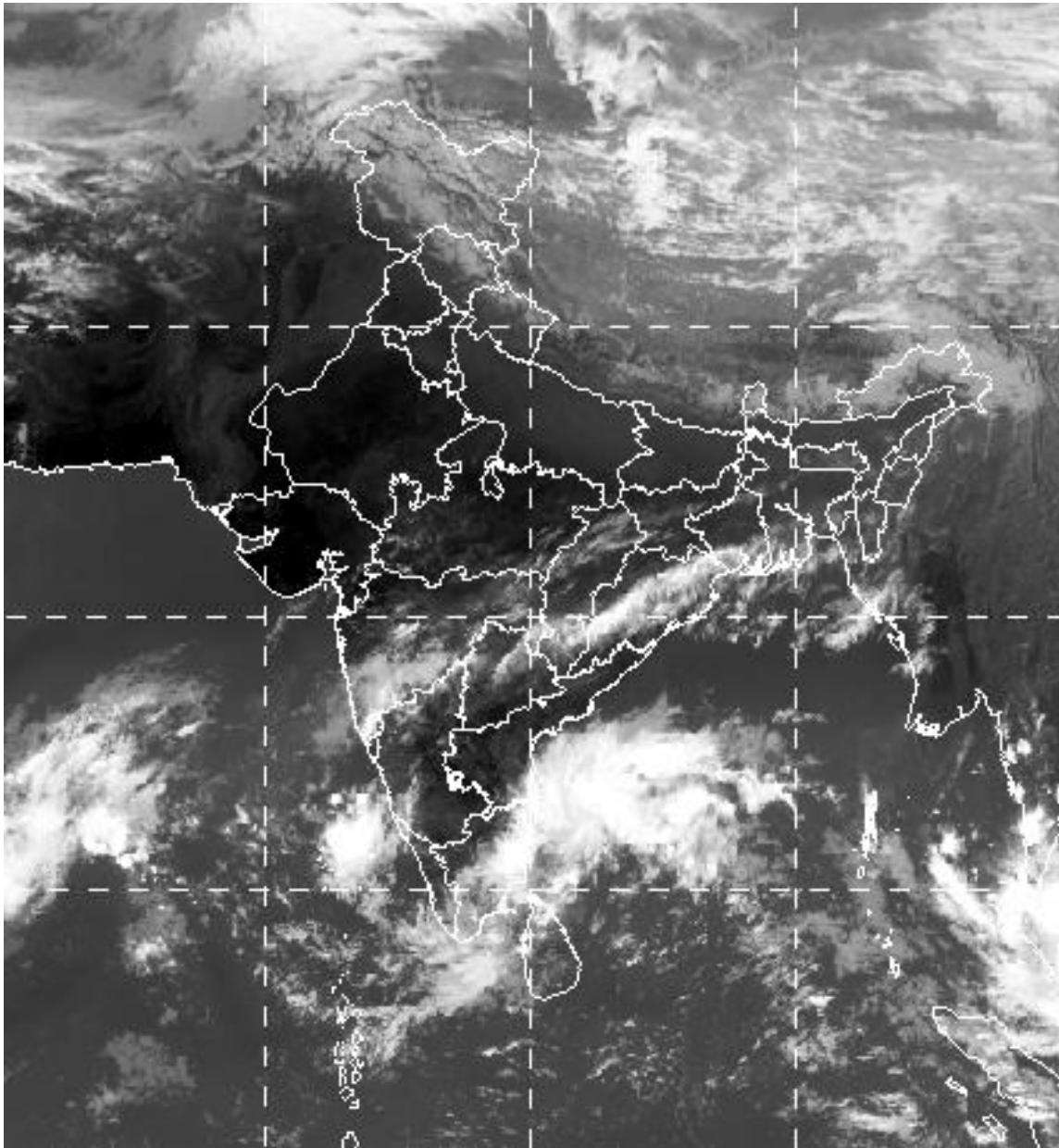
Kerala

Weather condition

Light rainfall received in isolated places in Kerala state during past few days. Maximum temperature ranges from 27.7 to 34.3°C and minimum temperature ranges from 21.8 to 24.7 °C.

Contingency measure:

- Paddy: Seedling stage. Rice armyworm There is a chance of rice armyworm in the paddy field. To control, ?Complete flooding of field for 24 hours wherever possible. Spraying of chlorantraniliprole @ 3 ml per 10 litre of water in the field, bunds and weeds. In the fields where transplanting is not yet undertaken, application of chlorantraniliprole granules @ 4 kg per one acre along with basal dose of fertilizers.
- Keep the field bunds and surroundings weed free. Banana-Spodoptera-Destroy the affected leaves along with the Spodoptera. If Spodoptera attack is severe, spray quinalphos 2ml per one litre of water or chlorantraniliprole 3 ml per 10 litre of water.
- Vegetables(cowpea)-Aphids-There is a chance of aphids in cowpea. Apply 2% neem oil emulsion or apply 20 g verticillium lecanii per one litre of water in 10 days intervals. If aphid attack is severe, apply 3 ml Imidacloprid or 2 g Thiamethoxam per 10 litre of water.



**Figure: 1. Latest available satellite picture as on 20 November 2018 at 0230 Hrs (IST).
(Source: IMD).**

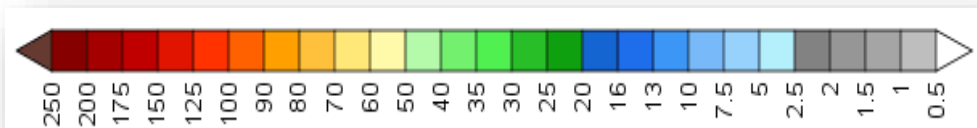
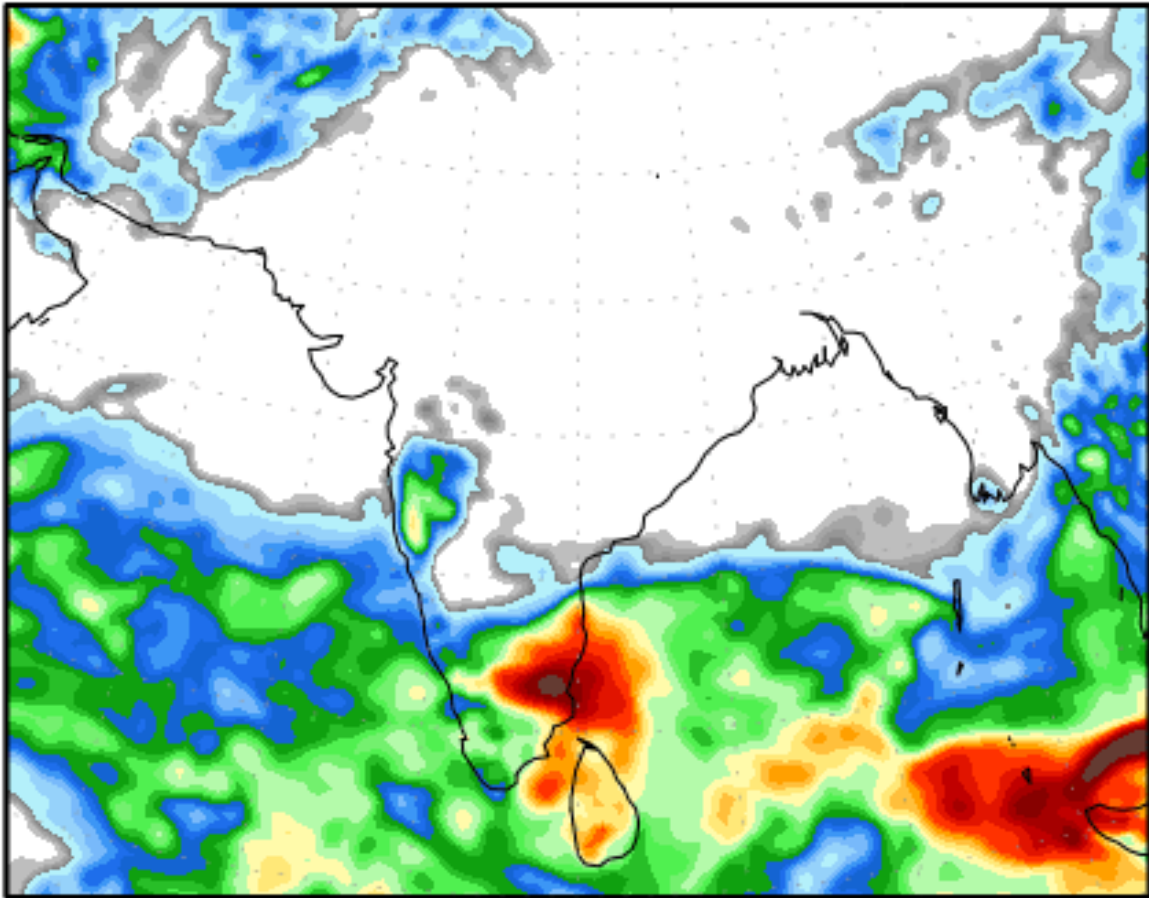


Figure: 2. Precipitation forecast for 20 to 27 November 2018 (Source: NOAA NCEP).